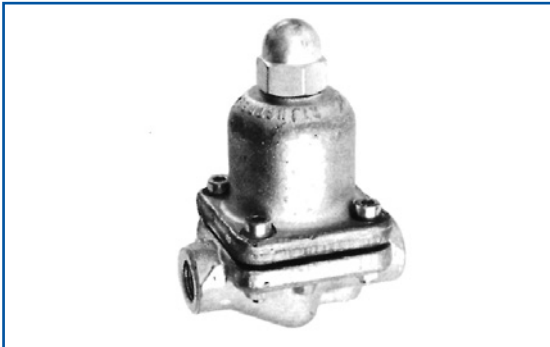


## Blok Steam Trap type MSV/MS



### Medium model: type MSV

Built-in strainer and external adjusting device for adjusting during operation. Valve functioning as automatic air vent, discharge- and check valve  
This model is especially suitable for small appliances and tracing.  
Operating pressure 0-23 bar.  
Application of this model drip steam and tracing lines.



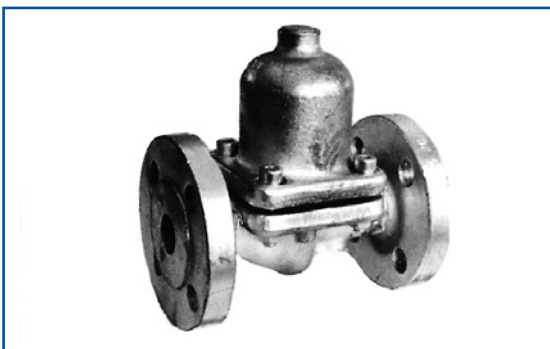
### Medium model: type MSV

Flanged.



### Medium model: type MS

As type MSV, however, without external adjusting device.



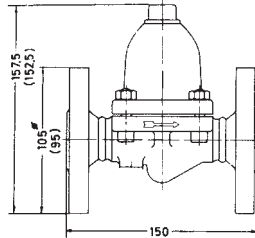
### Medium model: type MS

Flanged.

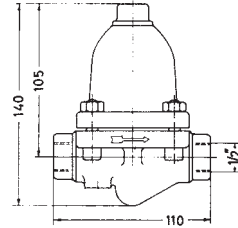
## Dimensions (in mm)

height adjustable type: 150mm

height adjustable type: 120mm



DN 15, DN 20 - 150 mm  
DN 25 - 160 mm

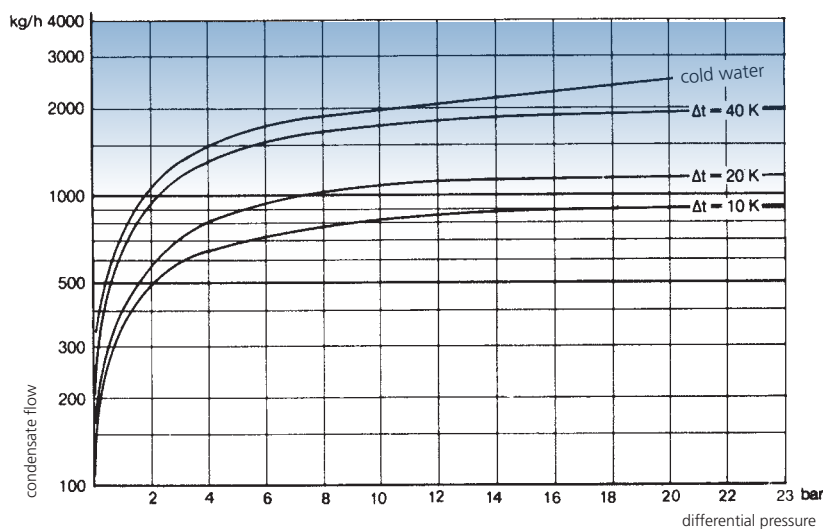


End connections	screwed: npt/bsp	welded: s.w./b.w.	1/2" and 3/4"
	flanged DIN	PN40	DN 15, 20 and 25
	flanged ANSI	150 or 300 lbs	1/2", 3/4" and 1"
Operating pressure	0-23 bar		
Max. temperature	400 °C		

## Materials

Body and bonnet	galvanized carbon steel	P250GH (comp. A105)
Internals	stainless steel	(valve hardened)
Gaskets	asbestos-free	

## Capacity



Subject to change.